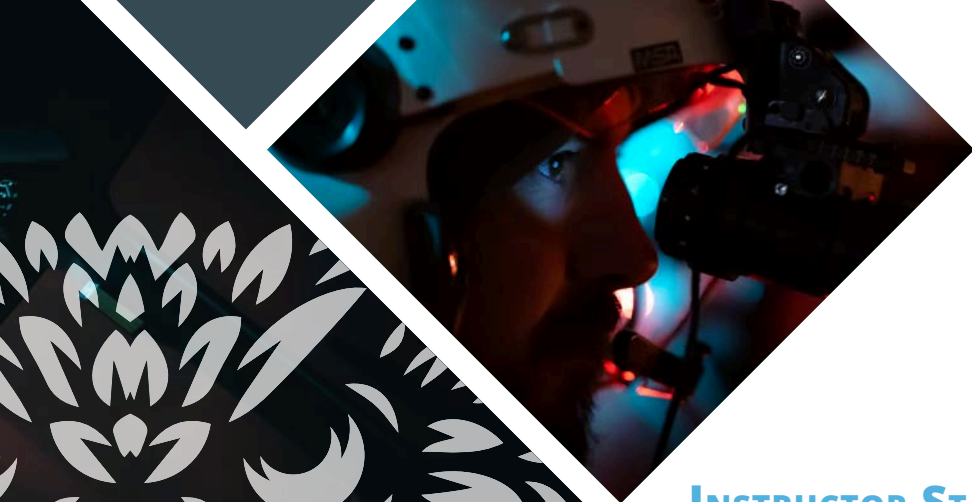


# ASU INSTRUCTORS



AVIATION SPECIALTIES UNLIMITED, INC.  
+1.208.426.8117 | [WWW.ASU-NVG.COM](http://WWW.ASU-NVG.COM)

## INSTRUCTOR STAFF

---

- **Joshua C. Grier** Director of Training
- **Anthony J. Tsantles** Chief Flight Instructor
- **Bradley E. Brummett** Senior NVG Instructor
- **Kim J. Harris** Chief Pilot
- **K. Kirkendall** NVG Instructor

## SPECIALIZED COURSES

### MISSION SPECIFIC / CUSTOMER TAILORED:

---

- Multiple Military Applications
- Emergency Medical Services
- Search and Rescue (over water/jungle/mountains)
- Law Enforcement
- Agricultural Spraying
- High Altitude / Mountain Operations

ASU has had partnerships with every one of these operations and all of our instructors have vast experience operating NVG's in these mission sets. Our instructors have employed weapon systems under zero illumination conditions with NVG's and have saved lives on pinnacles with the best NVG's available on the market. To target your company needs, contact us, we would be happy to help.

### NVG CFI COURSE:

---

ASU will provide you with the endorsement authority to continue the safe execution and training of your organization. No matter the experience level of the instructor, ASU has a unique blend of regulatory compliance experience, and challenging NVG instruction in training. Having been founded in 1995, our instructors have been the first in virtually every category pertaining to civil night vision goggle employment. We want to help your instructors be diverse and dynamic in the execution of nighttime training while remaining legal and safe.



Joshua Grier



Anthony Tsantles



# COURSES CONTINUED

## INITIAL NVG TRAINING:

Training can be scheduled at customer's location or in Boise, Idaho. This initial training is for those that have not had either exposure to NVG's or the regulatory endorsement to operate with the appliance in their current organization. Course focuses on obtaining visual references, scanning, proper search light use and both basic and advanced maneuvers on/off airport. We will ensure the student is comfortable in every available environment we can access during the training periods including mountains, jungle, confined spaces, over water, and snow/sand/dust landing considerations and techniques.

## RECURRENT/REFRESHER COURSE:

This course revisits everything pertaining to standardization from inflight maneuver execution, to Flight Manual Supplement (FMS), and Supplemental Type Certificate (STC) compliance review. We will ensure your program is up to date with the latest training materials and bulletins pertaining to NVG safety, we will ensure all aviators demonstrate the proper employment of the NVG tactics in your aircraft or ours. The external lens of ASU's credibility and experience may offer your team a breath of fresh air to the training program. ASU will help you introduce new material and additional challenges for even the most experienced aviators.

## FIXED TANK OPERATION COURSE:

It's night time and the fire is still burning. Why? We can help you put the fire out when winds are calmer and conditions are even more favorable for fire suppression. This course focuses on safe tactics necessary to engage and suppress fires at night with NVG's. We teach critical aspects of power management and coordinated flight through proper reconnaissance and planning.



Bradley Brummett

ASU  
INSTRUCTORS





AVIATION SPECIALTIES UNLIMITED, INC.  
+1.208.426.8117 | [WWW.ASU-NVG.COM](http://WWW.ASU-NVG.COM)

## DIVERSE TRAINING ENVIRONMENT

Should your organization choose to execute the training in Boise, Idaho, you will not be disappointed. In one flight, you will experience mountain peaks, valleys, confined spaces, over water, dense forest, and arid desert covered with dust or snow. **Idaho boasts more backcountry airstrips than any other state in the lower 48!** Adding the unique diversity of this environment to the NVG experience is what sets ASU above the rest.

TRAINING IN  
BOISE, IDAHO



# COURSE INFORMATION

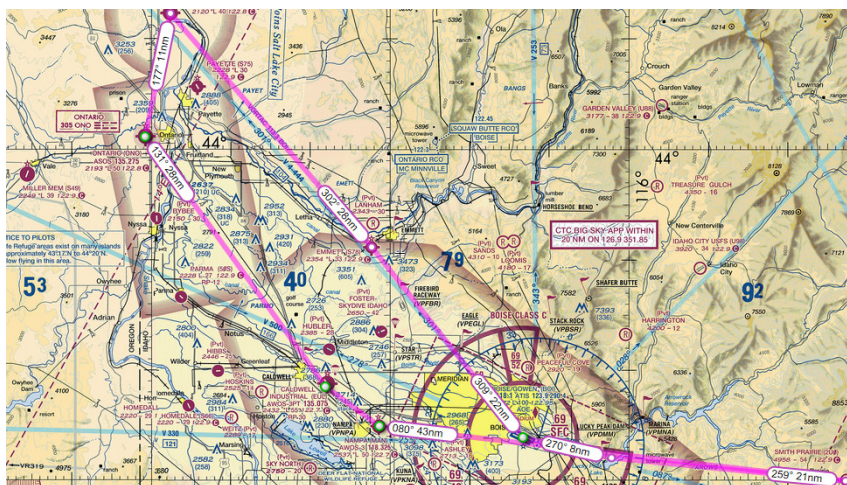
## ROTORCRAFT/HELICOPTER TRAINING ENVIRONMENT USING BELL 206:

This terrain map shows the vast amounts of training areas available to our customers. From the beginning of Lucky Peak reservoir (1st turnpoint for route beginning at the bottom of the picture below) and many miles beyond it to the North and East, the area is an approved nap-of-the earth training location that offers many different challenges including over water flight, pinnacle landings, confined space operations, and both snow/dust landings depending on season. Also available inside the Boise Class C airspace is a landing strip that may be used for traffic patterns as needed to hone proficiency in scanning with NVG's while gaining comfort operating the Bell 206.



## AIRPLANE NVG TRAINING ENVIRONMENT USING CESSNA 206:

The attached snapshot displays the commonly used training locations for airplane students. Multiple runways both lit and unlit are scattered throughout the Treasure Valley region with immediate climbs in elevation and complete darkness available north and south of these airports. Experience the challenges and beauty of elevated backcountry while flying with the highest quality NVG's and skilled instructors. Whether you operate in large metropolitan areas or in the middle of the desert, Boise offers a mix of just about everything except humidity.



TRAINING IN  
BOISE, IDAHO